

ELECTRICAL LEGEND & FIXTURE SCHEDULE

MARK	MODEL #	LAMP	DESCRIPTION
○			RECESSED CEILING MOUNTED FIXTURE
○			EXTERIOR WALL MOUNTED FIXTURE
○	F1		6" RECESSED CANS W/ DIMMABLE FLUORESCENT BULBS
○	F2		6" RECESSED CANS W/ DIMMABLE FLUORESCENT BULBS W/ WET LOCATION & AIR TIGHT LUSTED LENS
○	F3		EMERGENCY LIGHT
○	F4		EXIT LIGHT
○	F5		3 BULB G-LAMP
○	F6		2 BULB G-LAMP
○	F7		EXTERIOR WALL MOUNTED FIXTURE

NOTES:
E1 ALL FIXTURES TO BE SELECTED BY OWNER. SIMILAR TYPE SHOWN.

PANEL		SIEMENS 120/240	200A MAIN
1	20A	FRONT OFFICE	20A
2	20A	WELL PUMP	20A
3	20A	2ND OFFICE HALL	20A
4	20A	REAR OFFICE	20A
5	20A	BATH	20A
6	30A	LEFT STATION / SUMP PUMP	20A
7	30A	A/C	35A
8	30A	HEAT	35A
9	20A	GATE OPENER	12
10	BLANK		14
11	BLANK		16
12	BLANK		18
13	BLANK		20
14	BLANK		22
15	BLANK		24
16	BLANK		26
17	BLANK		28
18	BLANK		30
19	BLANK		
20	BLANK		
21	BLANK		
22	BLANK		
23	BLANK		
24	BLANK		
25	BLANK		
26	BLANK		
27	BLANK		
28	BLANK		
29	BLANK		
30	BLANK		

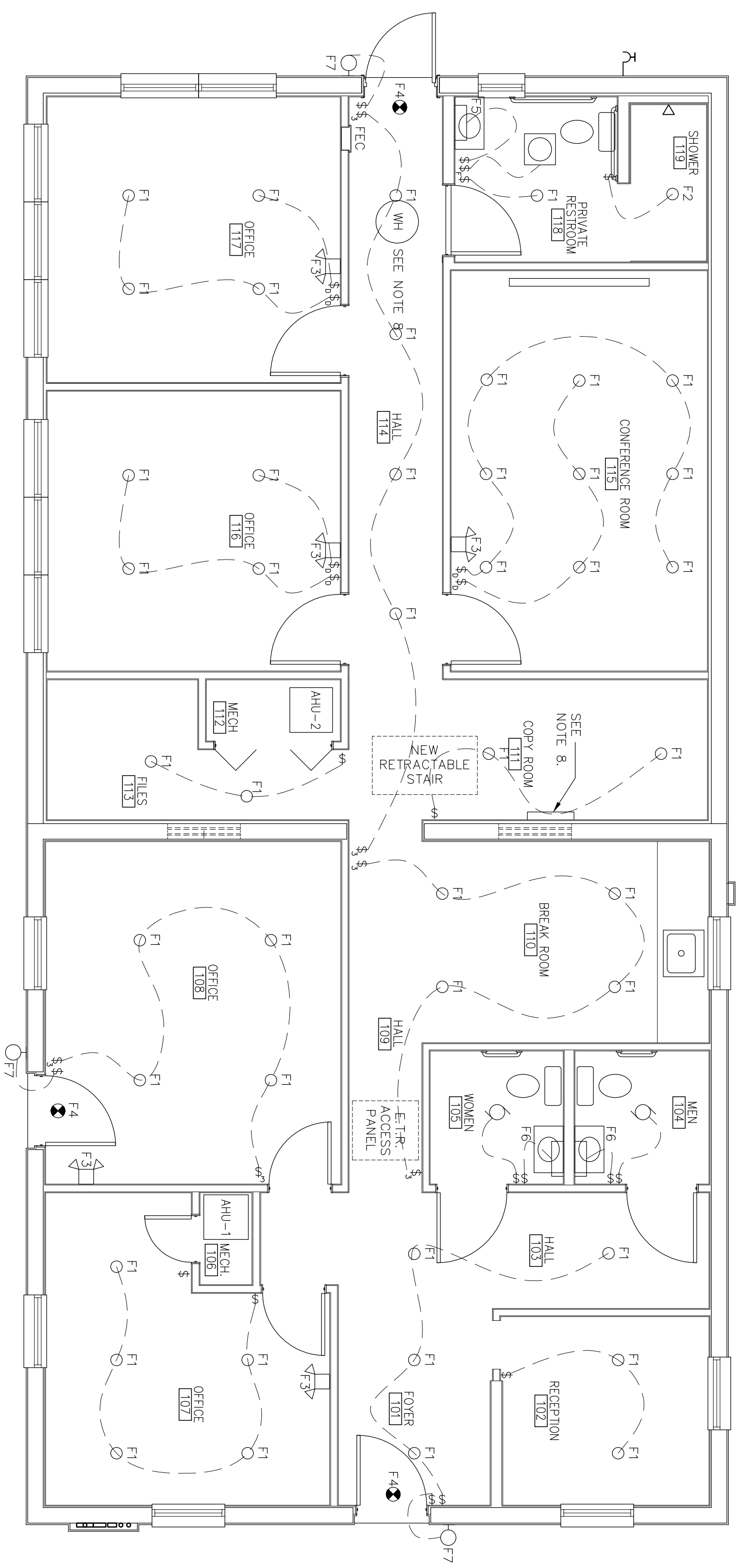
NOTES:
E1 DETERMINED IN THE FIELD.
E2 PROVIDE SEPARATE CIRCUITS FOR COMPUTERS IN EACH NEW ROOM.
E3 PROVIDE SEPARATE CIRCUITS FOR MICROWAVE, LIGHTS AND TV.

ELECTRICAL PLAN - LIGHTING NOTES

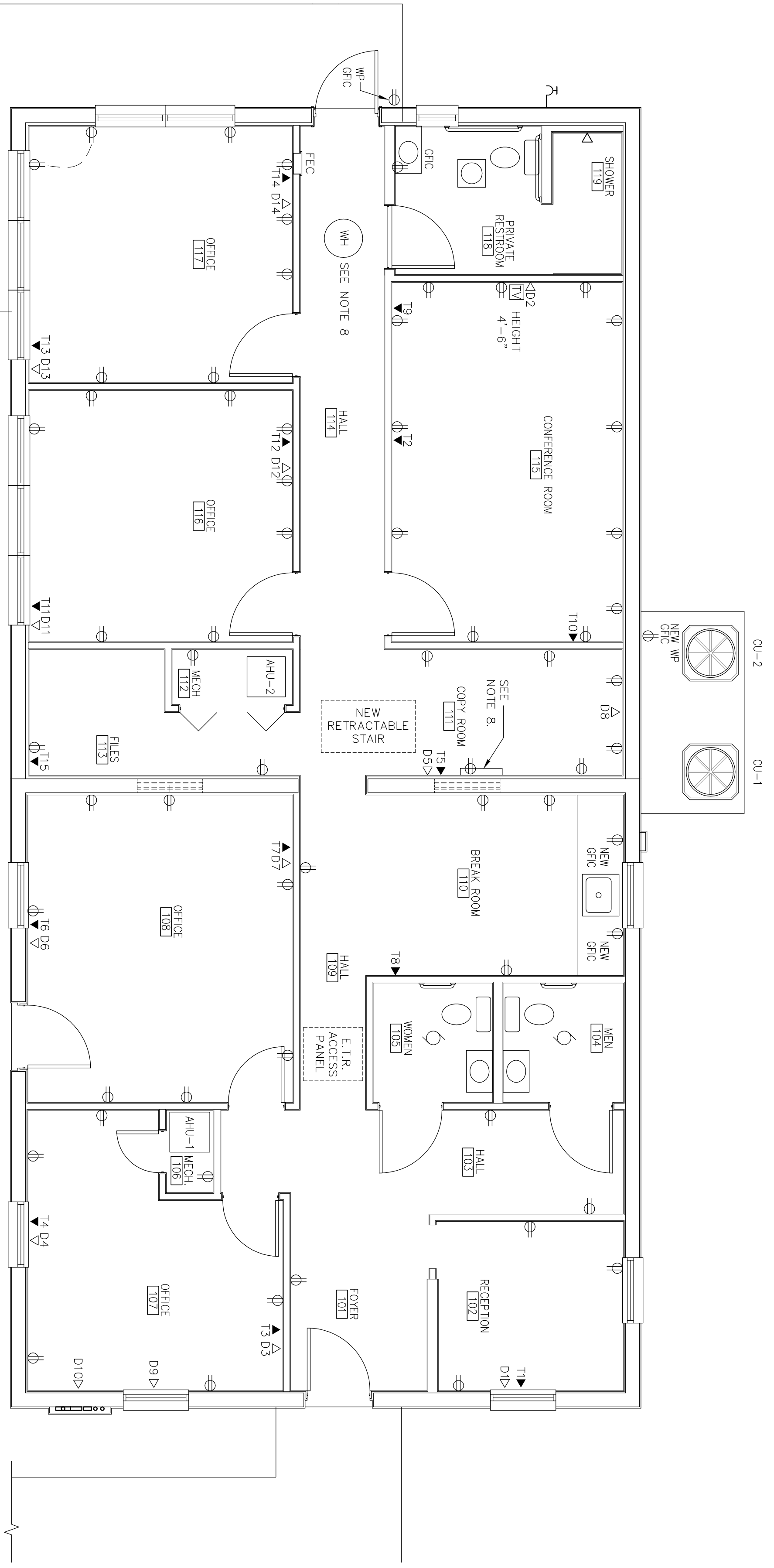
- EXISTING TELEPHONE SERVICE ENTRANCE FOR OFFICE. TELEPHONE SERVICE ENTRANCE FOR DATA ROOM. NEW MAIN. NEW STUCCO COVERED CHASE TO BE INSTALLED. SEE FLOOR PLAN/A1.1 AND NEW/RENOVATED WEST ELEVATION H/42.1.
- REMOVE EXISTING SURFACE MOUNTED LIGHT FIXTURES ON DEMOLITION PLAN/A1.1 (SHOWN DASHED) AND ASSOCIATED CONDUITS AND WIRING.
- DISCONNECT EXISTING EXHAUST FAN/LIGHT AND CONNECT NEW FIXTURE. SEE MECHANICAL DRAWINGS/PMT.1.
- ARCHITECT'S FINISHES OF NEW RECESSED LIGHT FIXTURES WITH REMOVE EXISTING WALL MOUNTED LIGHTS AND REPLACE WITH NEW.

ELECTRICAL PLAN - POWER & TELCOM NOTES

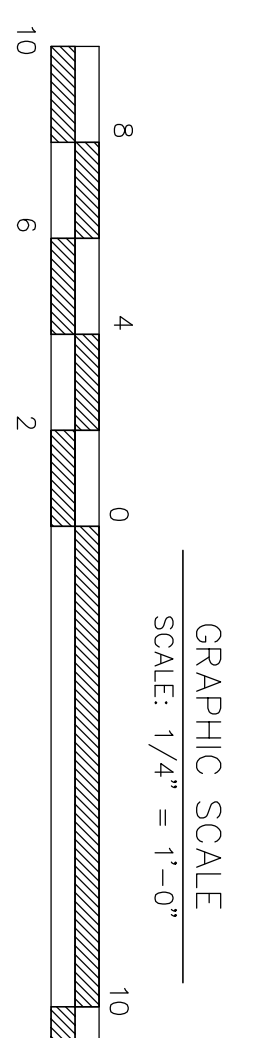
- EXISTING TELEPHONE SERVICE ENTRANCE FOR OFFICE. TELEPHONE FOR FABRICATION SHOP AND ELECTRICAL METER. TO REMAIN. NEW STUCCO COVERED CHASE TO BE INSTALLED. SEE FLOOR PLAN/A1.1 AND NEW/RENOVATED WEST ELEVATION H/42.1.
- SEE DEMOLITION PLAN/A1.1 FOR LOCATION OF EXISTING ELECTRICAL CONDUITS.
- REMOVE EXISTING AND RE-REMOVE EXISTING CONDUIT, WIRING AND DEVICES TO WATER SUPPLY AND TREATMENT SYSTEM INCLUDING AERATOR AND PUMP. DISCONNECT AND REMOVE EXISTING ELECTRICAL CONDUIT, WIRING AND DEVICES TO EXISTING LIFT STATION. PROVIDE AND INSTALL NEW CONDUITS AND WIRING TO RELOCATED LIFT STATION. PROVIDE AND INSTALL NEW CONDUITS AND WIRING TO RELOCATED EXISTING CONDENSING UNIT CU-1. REMOVE EXISTING AND PROVIDE NEW WATER HEATER IN ATTIC. SEE SITE PLAN/S01.1.
- DISCONNECT EXISTING CONDENSING UNIT CU-1. REMOVE EXISTING AND PROVIDE NEW WATER HEATER IN ATTIC. SEE ABOVE CEILING ELECTRIC WATER HEATER. SEE MECHANICAL DRAWING/ME1.1.
- DETAIL ON SHEET PME1.1.
- CONFIRM ELEVATION OF NEW TV FOR DATA AND RECEPTACLE HEIGHT.
- NEW TELCOM/DATA, 24" X 48", PLYWOOD BOARD - PAINTED. CONFIRM SIZE REQUIRED AND LOCATION WITH OWNER.



1 ELECTRICAL PLAN - LIGHTING
SCALE: 1/4" = 1'-0"



2 ELECTRICAL PLAN - POWER & TELCOM
SCALE: 1/4" = 1'-0"



GRAPHIC SCALE
SCALE: 1/4" = 1'-0"

DIMENSIONS ON THIS DRAWING ARE TO BE READ AS PLUS OR MINUS AND SHALL BE FIELD VERIFIED BY THE GENERAL CONTRACTOR PRIOR TO CONSTRUCTION.

DRAWN BY KSM CHECKED BY RJT	SHEET NO. E1.1	SHEET TITLE ELECTRICAL PLAN - LIGHTING, ELECTRICAL PLAN - POWER & TELCOM, AND SCHEDULES	OFFICE ADDITION FOR APEX METAL FABRICATION, INC. 177 COMFORT ROAD PALATKA, FLORIDA	DATE 04 JUNE 2010 FILE NUMBER 1009	REVISIONS	ROBERT E. TAYLOR AIA ARCHITECT P.A. FLORIDA REG. NO. AAC 000589 710 ST. JOHNS AVENUE PALATKA, FLORIDA 32177 PHONE 386 325 7341 FAX 386 325 0608 EMAIL TAYLOR@RET-TBD.COM	Robert E. Taylor, Architect Reg. No. AR 000594	SEAL
--------------------------------------	--------------------------	---------------------------------------------------------------------------------------------------------------	----------------------------------------------------------------------------------------------------	---------------------------------------------	-----------	-----------------------------------------------------------------------------------------------------------------------------------------------------------------------------------------------	---------------------------------------------------	------